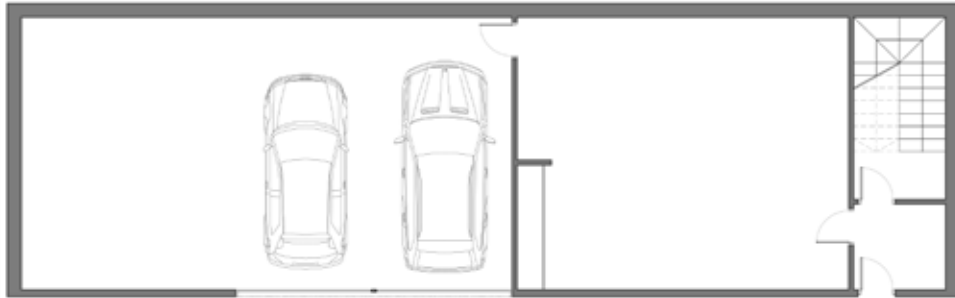
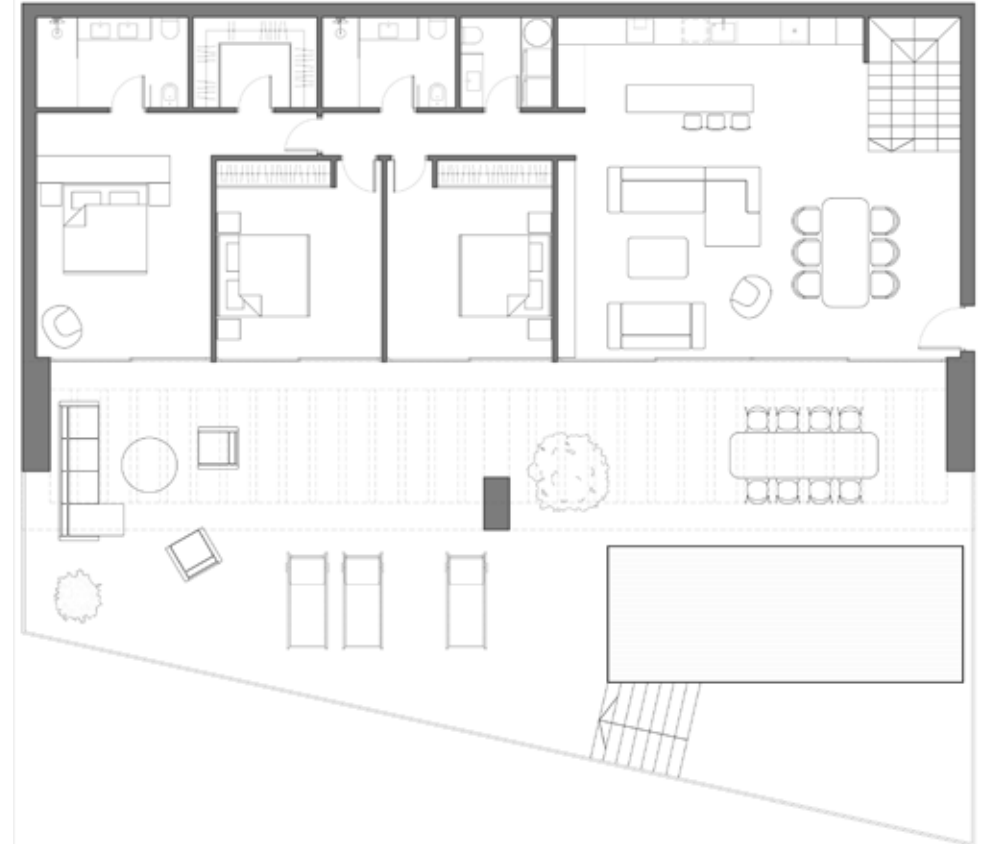


Basement Level



AREAS	
STAIRS	8,02 m ²
GARAGE	62,02 m ²
STORAGE ROOM	47,03 m ²
TOTAL USEFUL	117,07 m²
BUILT AREA	127,98 m²

Ground Level



AREAS	
STAIRS	5,91 m ²
LIVING ROOM-KITCHEN	62,75 m ²
PASSAGE	4,41 m ²
TOILET	3,60 m ²
BATHROOM 01	6,20 m ²
ROOM 01	17,10 m ²
ROOM 02	17,10 m ²
ROOM 03	23,67 m ²
DRESSING ROOM	5,35 m ²
BATHROOM 02	6,50 m ²
TERRACE (NON COMPUTABLE)	166,37 m ²
TOTAL USEFUL	157,59 m²
BUILT AREA	165,74 m²

HOUSE 12



POSITION

