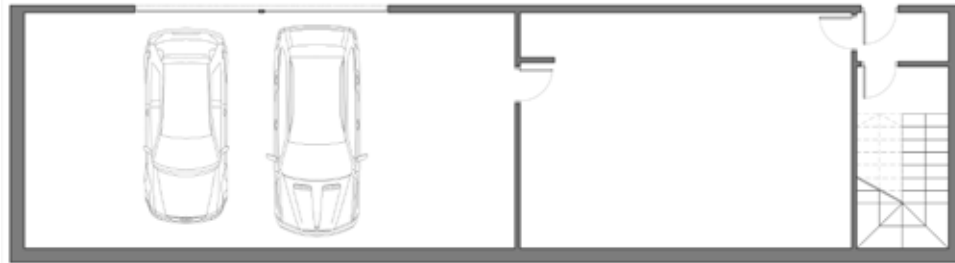
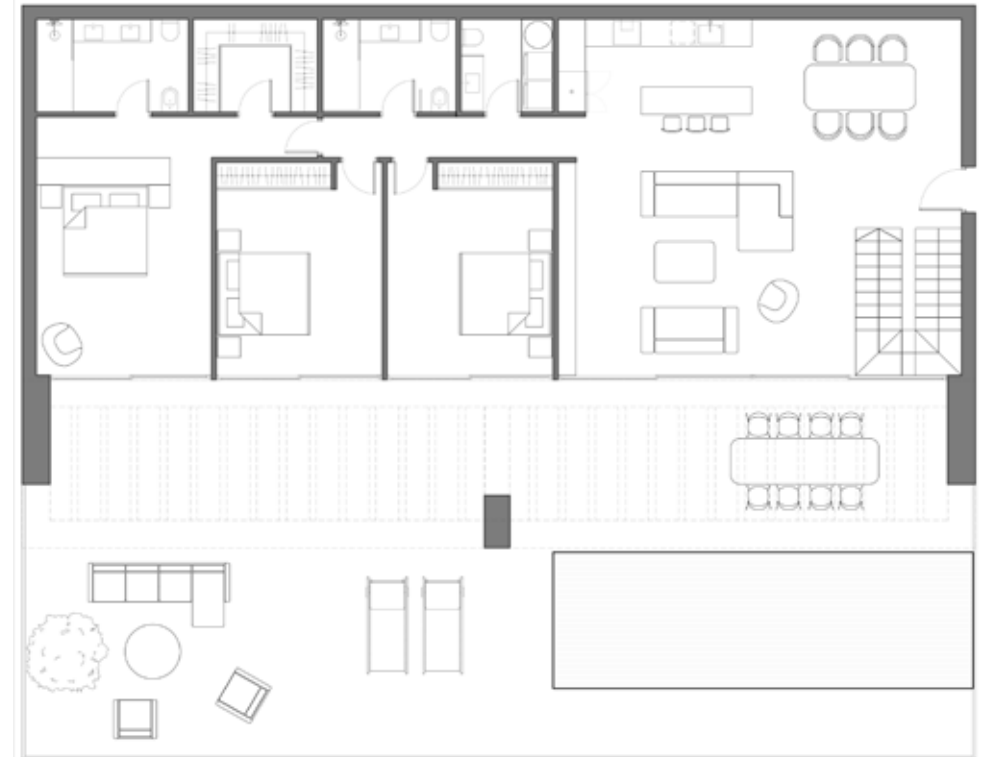


Basement Level



AREAS	
STAIRS	8,02 m ²
GARAGE	53,45 m ²
STORAGE ROOM	39,65 m ²
TOTAL UTIL	101,12 m²
AREA CONSTRUIDA	117,51 m²

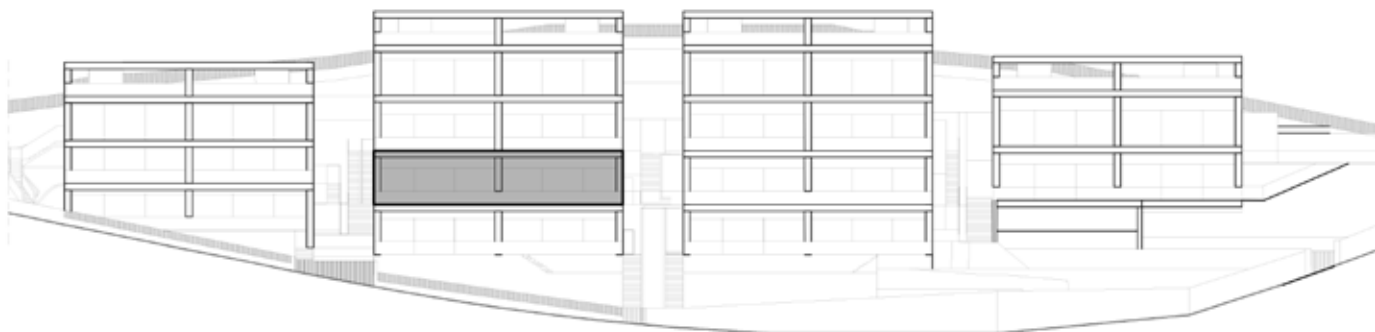
Ground Level



HOUSE 10



POSITION



AREAS	
STAIRS	7,39 m ²
LIVING ROOM-KITCHEN	61,74 m ²
PASSAGE	4,41 m ²
TOILET	3,60 m ²
BATHROOM 01	6,20 m ²
ROOM 01	17,10 m ²
ROOM 02	17,10 m ²
ROOM 03	23,67 m ²
DRESSING ROOM	5,35 m ²
BAHTROOM 02	6,50 m ²
TERRACE (NON COMPUTABLE)	163,53 m ²
TOTAL USEFUL	153,06 m²
BUILT AREA	169,74 m²